



@rgemas WMS

Warehouse Management System

Industry 4.0 applications

www.argebilisim.com



Warehouse, Region, Location, and Shelf Definition

This is the definition module where warehouse, warehouse zones, locations and shelves are defined.



Material Request Module

With the material request module, materials or vehicles can be requested from the purchasing unit or warehouse. If the material request cannot be met from the relevant unit, the request can be removed with the reason. This is the module where the material request is managed.



Purchase Order

This module manages the purchasing process. Purchase Order Materials created by the purchasing unit can be accepted by the goods acceptance unit by selecting from the pool or by scanning barcodes. If a request is made from this purchase, the requesting person information is also provided.



Goods Acceptance Input Module

It is a module consisting of software and data collection hardware that manages the goods acceptance process. During the goods acceptance phase, the user can transfer Purchase Order Materials in bulk by selecting them from the pool and entering the quantity.



Input Control (Raw Material Quality Control)

It is the module where values are entered by checking if quality control is required during the goods acceptance phase.



Material Accompaniment Card

In goods acceptance, the user can create the entry Accompaniment card by entering the in-package quantity and total package quantity for each item of material.



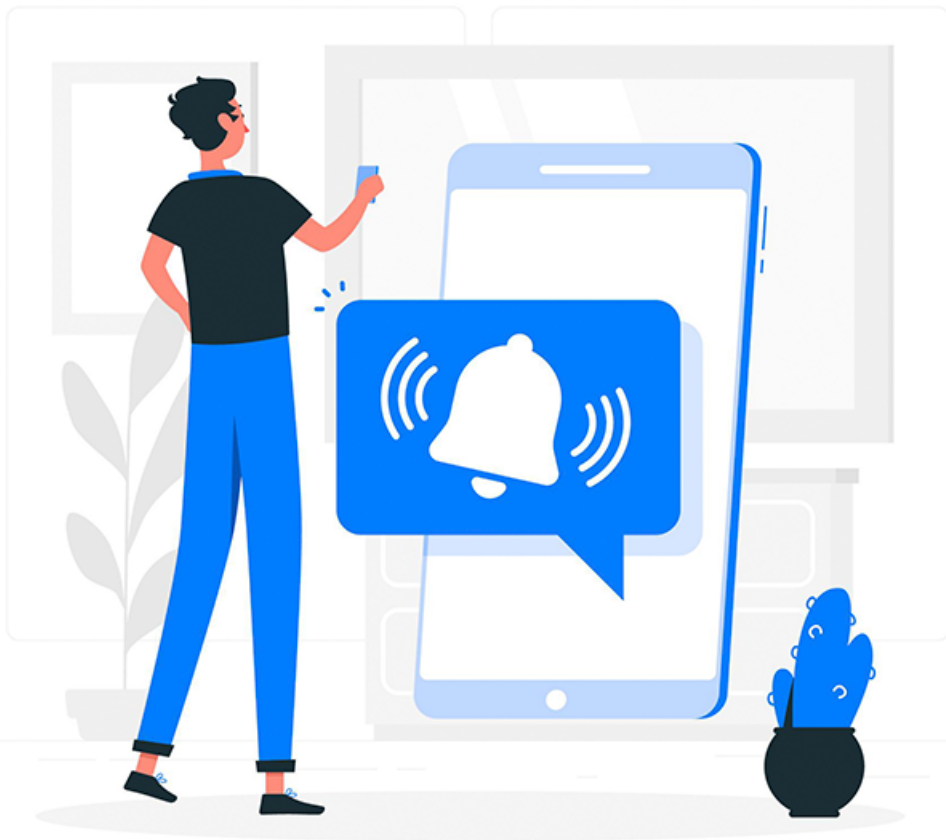
Material & Finished Goods Transfer

It is the module where movements between stock locations are managed. Material transfer can also transfer materials from one location to another location by reserving the materials to a production order (work order).



Line Transfer

It is the module where the material transfer process between units is carried out. The transfer process can be carried out by issuing a form for approval between units. In addition, thanks to this form, warehouse management can delegate warehouse operations.



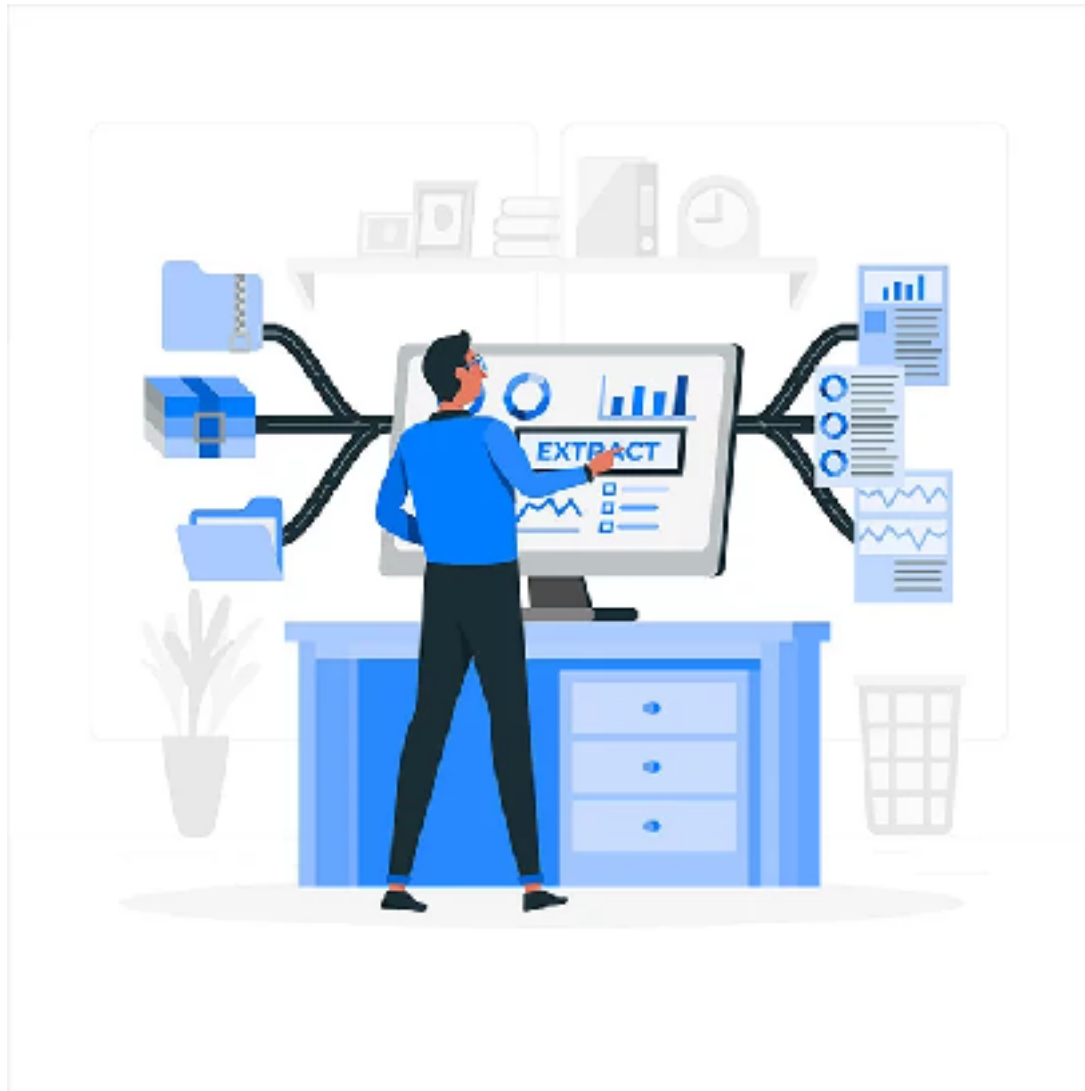
Stock Transfer / refund Notification / Usage Definition

It is the module where stock processes are carried out. Material transfer can be done via web and mobile devices.



Counting Definition

This is the module where the counting process is carried out.



Software Integration

It is the software service realized for the integration of @rgemas and other software used by the company. Integration with over 30 other ERP and/or Accounting software has been realized.