



@rgemas ERP

Enterprise Resource Planning

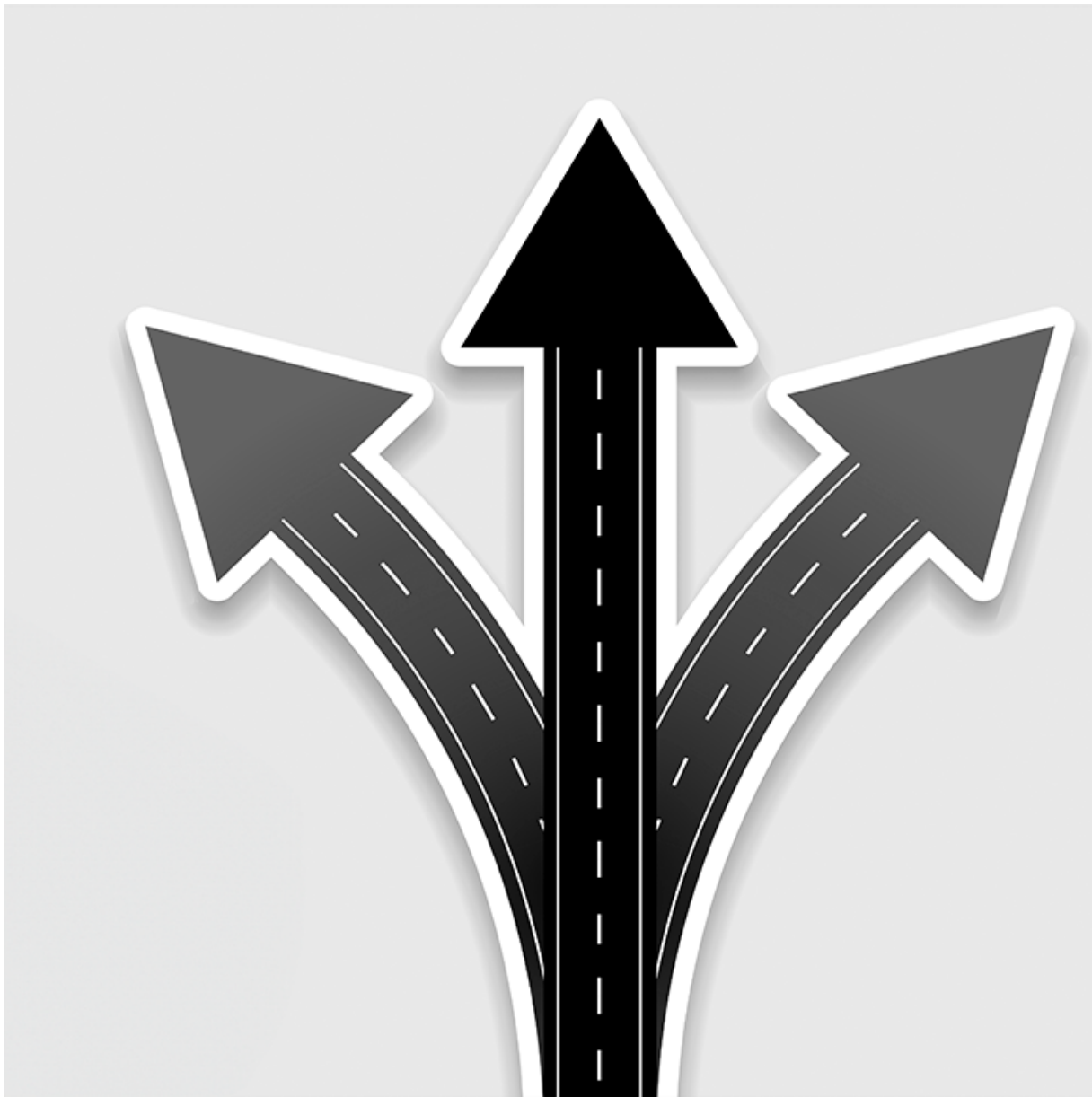
Industry 4.0 applications

www.argebilisim.com



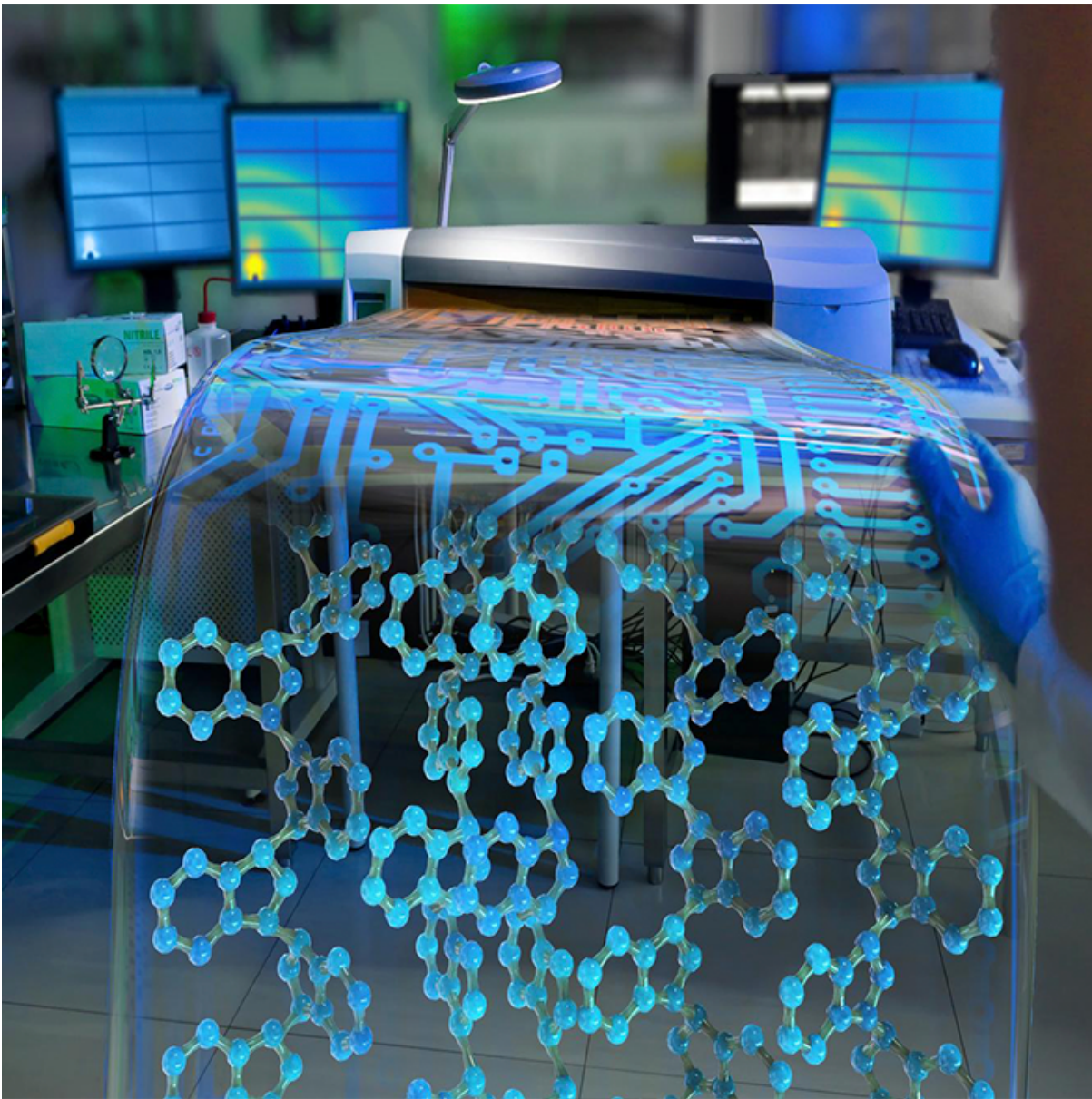
Order Management

It is the module where customer and production orders are entered, converted and managed.



Routing

This is the module where routes are created and managed.



BOM Preparation

This module defines the materials and processes used in the production of the product. Alternative tree and/or materials can be defined.



MRP Module

This module is used for requirement planning by utilizing the material product tree according to order, order group and/or order probability.



Production Scheduling

It is a scheduling module in which time & action plans of orders are prepared and planned for production units using time and capacity limit parameters.



Purchasing Module

This is the module where MRP reports, BOMs and non-project requests are entered and approved.



Warehouse & Stock Module

It is the module where the warehouse is defined as warehouse, region and address, materials or products coming from purchasing or other channels, if permitted, are entered into the warehouses, and they are moved as stock, order dependent or independent. Products or materials can also move with barcodes. It is a module with a very strong traceability basis.



Production & Production Tracking

This is the module where the material and/or intermediate product is consumed and the intermediate product and/or product is produced and tracked.



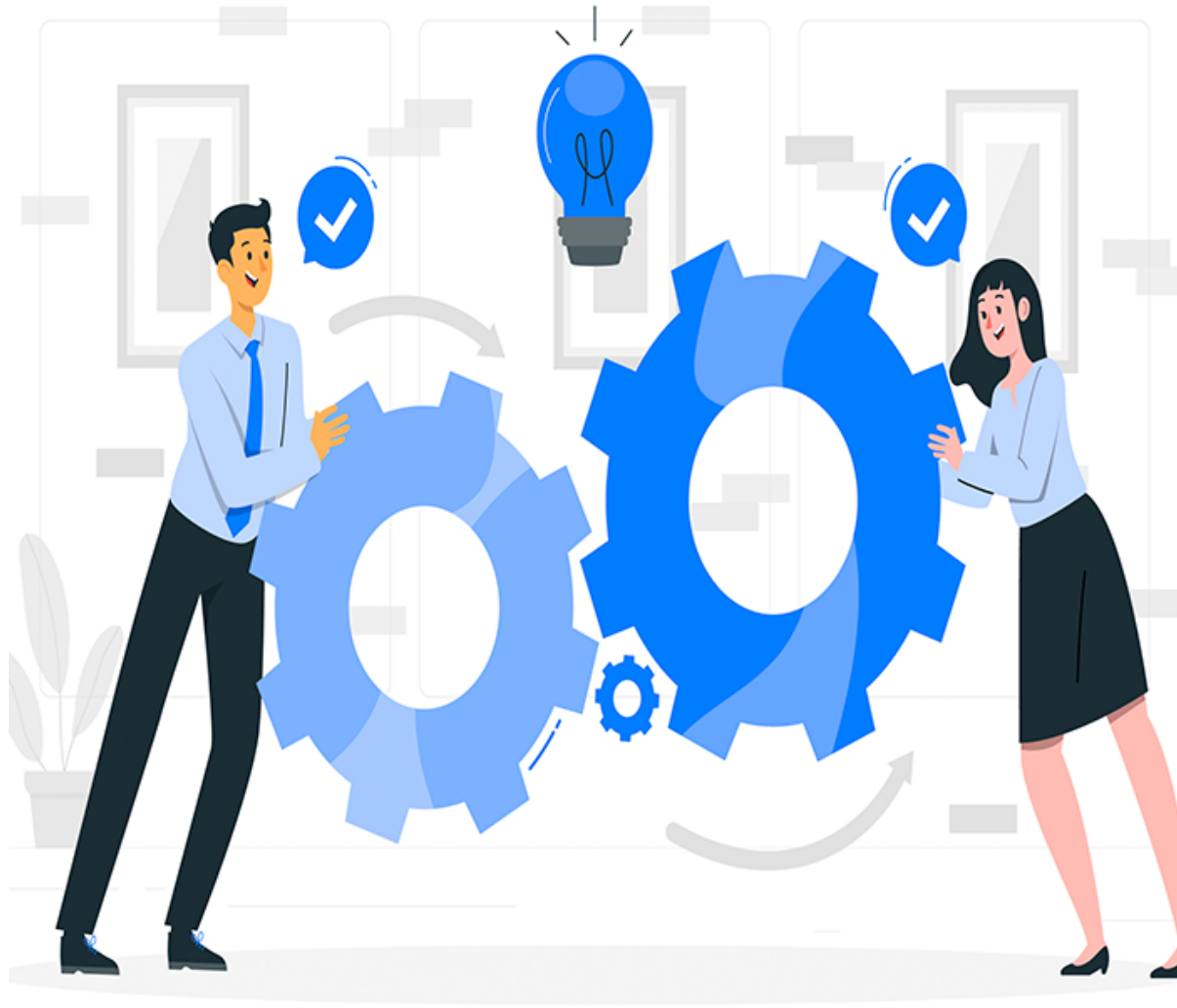
Measuring OEE

It is a Lean Production tool that measures the effective utilization rate of machines. It is a module developed for the effective use of machines.



Productivity & Performance Measurement

In assembly lines, productivity is a metric of the ratio of labor converted into intermediate or finished products to labor expended. To improve productivity, @rgemas measures productivity in real time.



Quality Management Module

It is the module where the quality of materials and products is measured and reported with detailed parameters such as operator, operation, error type, and where CAPA s (Corrective And Preventive Action) are prepared and implemented.



Machine Maintenance And Repair

With the machine fault tracking module, it is aimed to minimize the downtime of the machines due to malfunctions. Machine maintenance is the module where machine maintenance is planned and its implementation is monitored.



Wage Management System Module

Modules where bonuses and fair wages are calculated and implemented



Warehouse Management System Module

It is the module where warehouse and stock processes are managed.



Shipment Management Module

It is the module where shipment operations are carried out, with the help of a mobile device or PC, orders, materials or products are collected and shipped.



Cost Management Module

It is the module where the cost of stocks, products and each order is calculated and reported as labor and material.



Product Design Management

It is the module where product design is managed. All revision, technical drawing and variant documents are archived and managed.



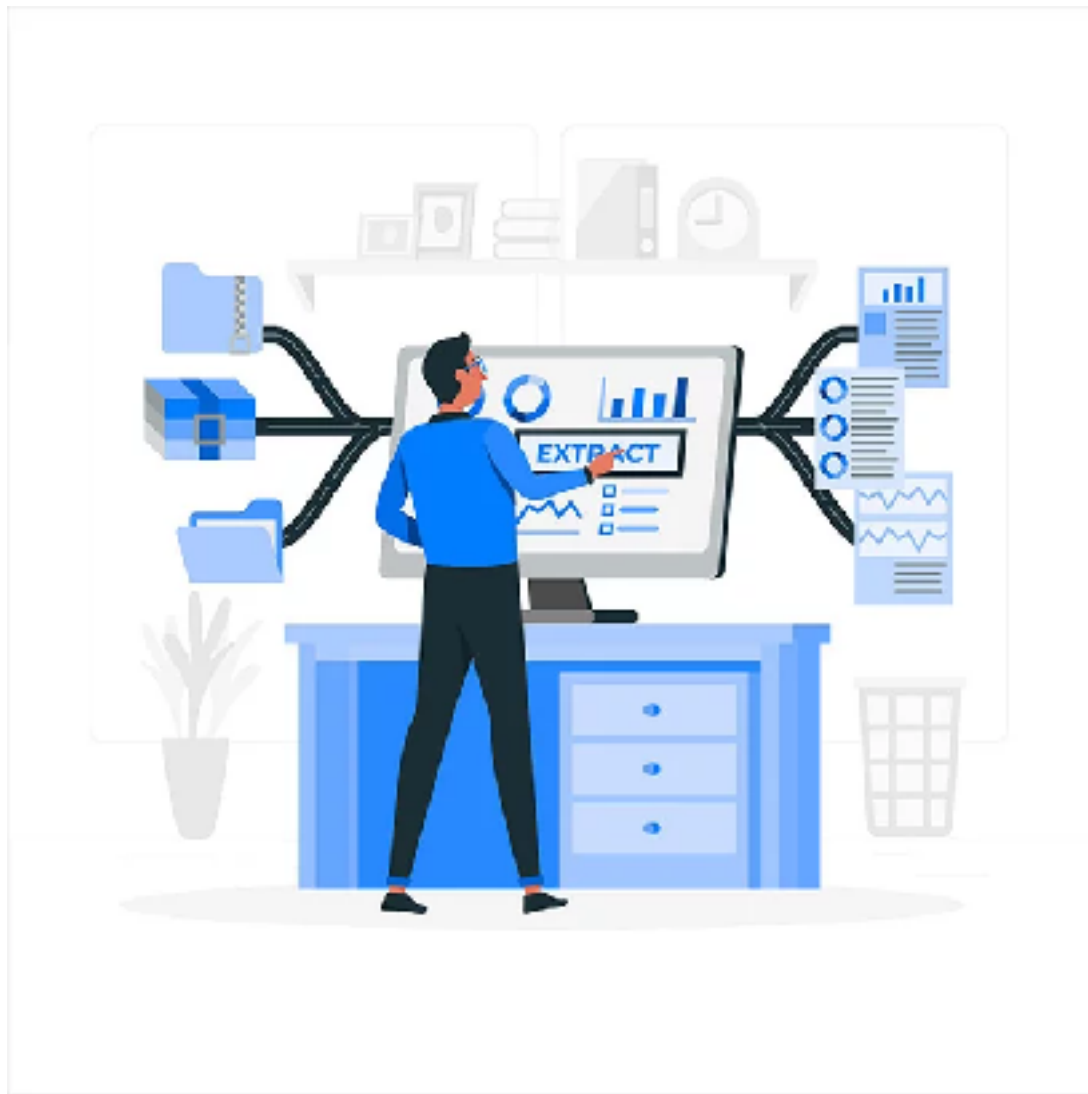
Supplier And Customer Evaluation Module

This is the module where criteria for supplier and customer evaluation are defined, entries are made, points are given and reported.



Human Resources Module

It is the module where personnel attendance control and payrolls are created.



Software Integration

It is a software service for @rgeMAS integration with other software used by the company. Integration with more than 30 other ERP and/or accounting software has been realized.